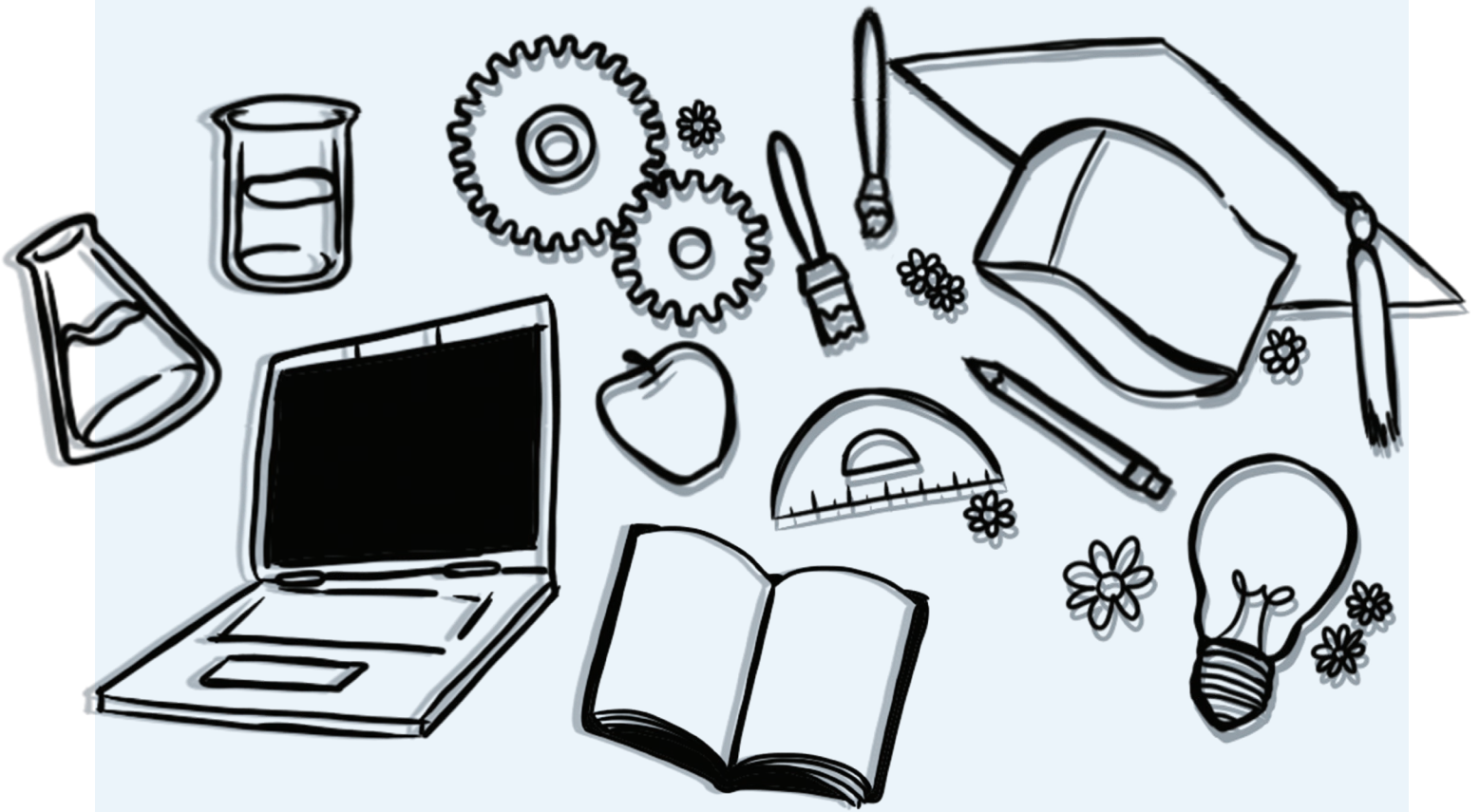




2021-2022 ANNUAL REPORT

July 1, 2021-June 30, 2022

TABLE OF CONTENTS



A MESSAGE FROM ERIKA & MAGAN

1

WHO WE ARE

2

FY 21/22 HIGHLIGHTS

3

OUR TEAM

12

FINANCIALS

14

PUBLIC SCHOOL CHAMPIONS

16

A MESSAGE FROM ERIKA & MAGAN

Dear Friends,

As we continued to navigate through the global pandemic last year, we found our mission to be more relevant and urgent than ever. Students, families and educators continued to face unprecedented challenges, and our community continued to rally and do incredible things to support them.



In the fall of 2021, community funds provided picnic tables, outdoor desks, and shade for students **eating and learning outside**. Durham's investments in **school transformation** strategies made a big difference in teacher retention, one of many challenges that have been exacerbated by COVID-19. And community leaders came together to address **urgent mental health needs** for our students and staff.

Together we can continue what we've started: supporting more DPS students, families and educators than ever before, dismantling barriers to equity for our underserved communities, and advocating for transformational systems-level change across Durham, all while championing our amazing public schools. Let's do this!

Erika Wilkins
Deputy Executive Director

Magan Gonzales-Smith
Executive Director



WHO WE ARE

Our mission is to catalyze big ideas and foster community engagement that will accelerate the transformation of Durham Public Schools to ensure success and equity for every student.

DPSF's work is centered on driving system-wide change that increases equity for all students, dismantles systemic racism, and helps strengthen our public schools, so all Durham students can learn, dream and thrive.

WHAT WE DO

We do this by acting as a:



Champion

Building community-wide support for public schools



Convener

Bringing together community partners & building coalitions that strengthen shared work across Durham



Innovator

Incubating and investing in innovative solutions and scaling what works across DPS



Advocate

Identifying barriers to equity and advocating for change



Funder

Streamlining and increasing giving across DPS to more equitably distribute resources



**HERE'S
WHAT WE
ACCOMPLISHED
TOGETHER
IN FY 21/22**

INVESTING IN SCHOOL COMMUNITIES

1

At the start of the school year, with COVID-19 on the rise and students back in school, we awarded \$127,300 in **Outdoor Eating & Learning** Grants to 34 schools to support efforts to safely eat and learn outside.



Dear Bull City Foundation, Thank You so much for the picnic tables now we don't have to sit on the cold hard ground with the bugs. Thank You!

2

Funds from the community also provided \$30,000 in **grocery store gift cards** to 10 elementary schools to help DPS staff support families after the holiday season.



3

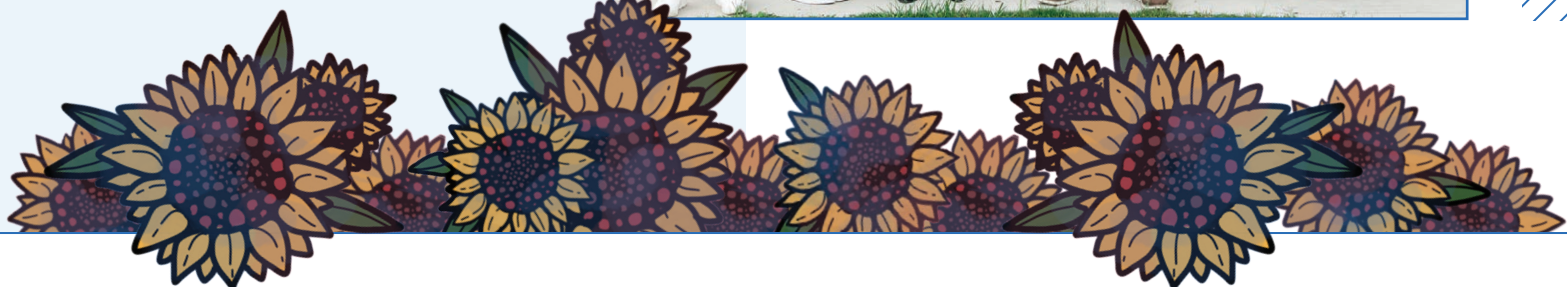
We awarded \$310,000 to projects advancing true digital equity, bringing the total for **Accelerating Digital Equity** to more than \$1.8 million. In FY 21/22 we funded digital literacy workshops that helped parents with little to no computer experience connect with their school and their child's education. Participants received a laptop to take home, thanks to our partners at Lenovo.



Lenovo

4

We awarded \$59,500 in **college scholarships** to 25 graduating DPS students and strengthened our process with a focus on equity and accessibility. Forty-four percent of our 2022 scholarship awardees were first generation college students and 67 percent reported a total household income of under \$40,000.



“I plan to give back to public schools in the same way that public schools have given so much to me.”

KIKI KOZAK

Kayla P. Radack Scholarship

DISTRICT-WIDE TRANSFORMATION

The Road to **WHOLE** Schools

The pandemic accelerated the mental health challenges facing students and educators everywhere.



Learn more about **WHOLE** Schools:
www.wholeschools.org



Through community listening sessions, conversations with our partners, and our collaborative white paper **Onward!**, we identified the urgent need for mental health support for students and educators. More than 50 percent of teachers we surveyed reported that their students were more withdrawn, more anxious, and more stressed.

In spring of 2022, we launched **WHOLE Schools** in partnership with DPS and Duke Health to answer the big question: “What does a model Durham Public School do to ensure all students and adults in the school community have the mental health resources they need to thrive?”

In June, at the close of the school year and with another school shooting in the national news, hundreds of community members gathered for the **WHOLE-istic Healing Festival**, a joyful day of healing for our school communities.

“Once I got back to being in person, I had to figure everything out again. How to socialize, how to talk, how to introduce myself.”

ANAIYA MOORE

Student and participant in Pupusas for Education
Mental Health Retreat in December, funded by DPSF



Bull City Community Schools Partnership

We deepened our commitment to the Bull City Community Schools Partnership.

Community Schools is a school transformation model that takes a whole-child approach. In Durham, this model is being implemented in DPS in partnership with Durham County, Duke University, NC Central University and over 30 community organizations.

“What we’re trying to do is bring up a healthy and collaborative community, and the Community Schools model really gives us a picture of what that could look like.”

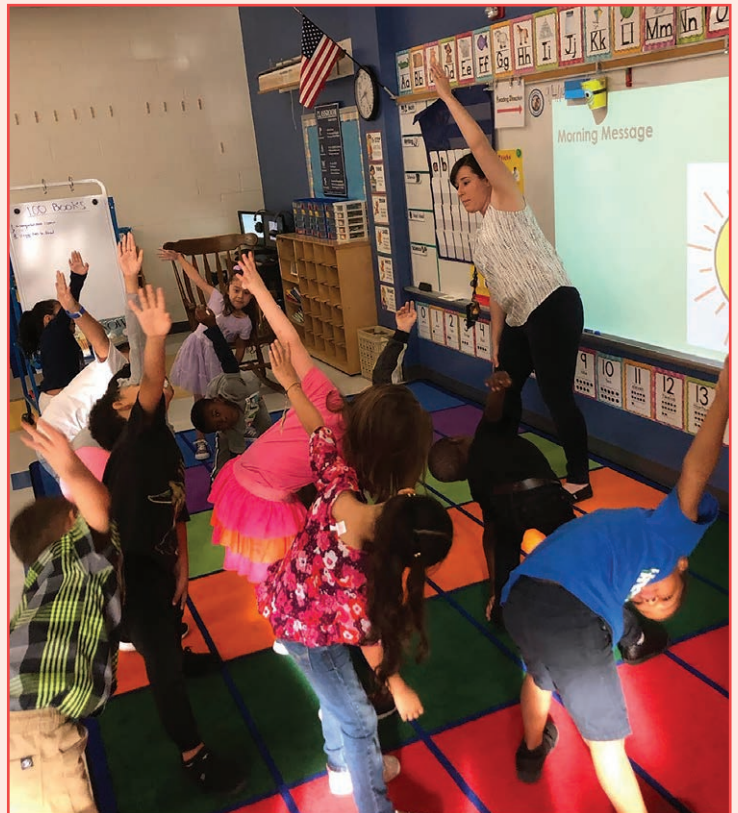
ABBY MARTIN

ESL Teacher, Club Boulevard Elementary



The Community Schools model is addressing many of the urgent issues facing our schools. Teacher turnover at Club Blvd Elementary was 25 percent in the four years before becoming a Bull City Community School. That number dropped to 11 percent average in the first four years since becoming a community school (and was just 5 percent in the 21/22 school year.)

Community Schools highlights for FY 21/22 include establishing family resource centers, investing in building parent leadership among families of color in community schools, and preparing to expand the partnership to new schools in FY 22/23.



STRENGTHENING ADVOCACY & ENGAGEMENT

1

In October, 140+ people came together for a conversation about **Race, Class & Privilege in our Schools** that DPSF and Student U co-hosted. Together, we learned about the history of past policies in order to thoughtfully engage in important decisions around new school boundaries and assignments (DPS Growing Together).

An INDY letter to the editor from DPSF Executive Director Magan Gonzales-Smith and Student U's then Executive Director Alexandra Zagbayou also urged community members to engage with Growing Together and advocate for equity in school assignments.



2

We began convening the **Academic Success Alliance**, a group of local organizations that have a shared vision to develop strategies that assist DPS students in finding success in college. This group includes partners such as Duke College Advising Corps, Durham Children's Initiative, Durham Public Schools, Durham Public Schools Foundation, Durham Tech, the Emily K Center, and Student U.



3



Every Friday in spring and summer of 2022, Latinx families from more than 15 schools came together at the Community Garden at Club Blvd Elementary. These families engaged in growing, harvesting, and cooking food together while learning about community issues relevant to them. The garden was made possible with a grant from the City of Durham, and DPSF has partnered with two **Latinx parent leaders** throughout the year on the project. In the year ahead, more than 12 parents from this group will be working together to advocate for Latinx students in DPS.

“When parents are partners in our schools they support academic outcomes by adding to culturally responsive curriculums. Asking questions like, ‘Will this field trip or event connect our kids to our heritage and our stories?’”

MERCEDES MCCURLEY

DPSF Family Engagement Organizing Fellow

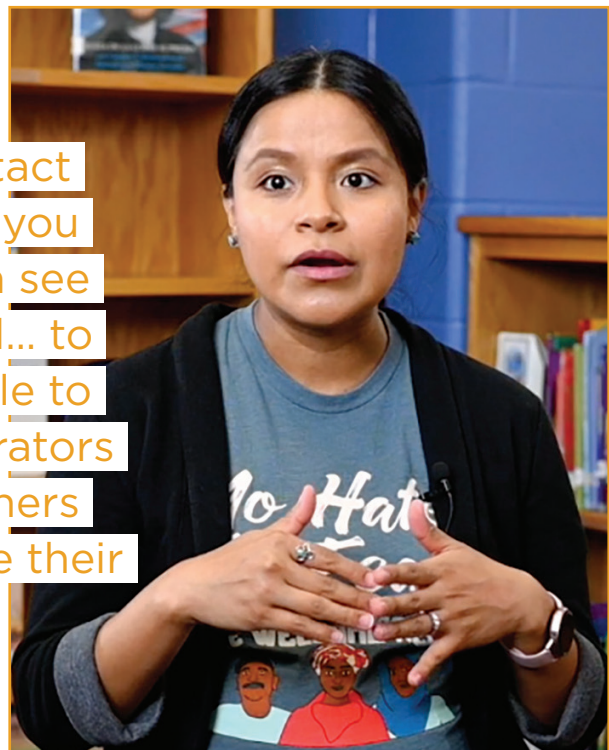
4

Bull City Community Schools Partnership built **leadership among parents** in community schools:

“Parents that I have constant contact with now are so appreciative, like you can hear it in their voices, you can see it on their faces. They are thankful... to be able to have a voice and be able to provide feedback to our administrators in the building as well as the teachers in the building. They’re able to use their voice to make a change.”

MAYRA MORALES

ESL Teacher, Lakewood Elementary



NURTURING LEADERSHIP



“Like many principals, I am a bit of a control freak! Shared leadership has been my biggest area of growth, and I feel like it’s my biggest area of strength now.”

TERRY PHILLIPS

Principal, Club Blvd. Elementary

1

It’s rare for principals across K-12 to regularly get together. But during the 21/22 school year, eight elementary, middle, and high school principals met monthly through the **Principal Leadership Fellowship**. This collaborative cohort is reflecting on their leadership styles, learning collective problem-solving strategies, and supporting one another’s growth.

2

The **Teacher Leadership Academy** cohort learned new practices for supporting all students in their classroom. Training included Black Genius professional development with Village of Wisdom, anti-racism training with we are, and peer-to-peer mentoring with Duke Teach House.

3

Students on the **Youth Advisory Council** hosted the second Youth Equity Summit. After connecting with Kids Voting Durham for the summit, they helped create a Kids Voting voter guide for youth in advance of the school board primary.



INCREASING GIVING

Our public schools are at the heart of our community.
When DPS thrives; Durham thrives.

In May we launched **Corporate Leaders for Public Education**, a new network of companies that are collaborating with the Foundation and DPS to build strategic corporate partnerships with our public school district. Thank you to all of our corporate donors who are listed on page 16.

We had **600+ community members** give gifts ranging from \$5-\$12,000



Founding Corporate Leaders for Public Education



“As our region experiences rapid growth and increasing competition for talent, we need robust, strategic, and aligned investment from the business community in our public schools. This is our moment to go all in for public schools.”

ADAM KLEIN

Chair of the Durham Chamber of Commerce Board,
Co-Chair of DPSF Board, and DPS Parent

OUR TEAM

Current Board of Directors

Vernetta Alston

NC State Representative, Attorney

Kelvin Bullock

Executive Director for Equity Affairs,
Durham Public Schools & DPS Parent

JB Buxton

President, Durham Tech Community College

Richard Chung, MD

Pediatrician and Adolescent Health
Specialist, Duke Health & DPS Parent

Drew Cummings

Chief of Staff, Durham County Government
& DPS Parent

Satana Deberry

Board Vice Chair, Durham District Attorney
& DPS Parent

Brittany Gregory

Director of Programs, Durham Partnership
for Children

Zack Hawkins

Board Co-Chair, NC State Representative,
Director of Development, Student Affairs,
UNC-Chapel Hill & DPS Parent

Axel Herrera Ramos

Civic Engagement Manager at Poder NC
Action & DPS Alum

Susan Herst

Realtor, Urban Durham Realty

Matthew Hickson

Former DPS teacher & principal

Special thanks to former board members

**Joshua Gunn, Laura Helms Reece, and Erika
Wilkins for their service during FY 21/22.**

James Hopkins

Principal, Lyons Farm Elementary School &
DPS Parent

Mika Hunter-Twietmeyer

DPS Teacher (2019 DPS Teacher of the
Year), Adjunct Instructor Duke Masters of
Arts in Teaching (MAT) Program, Durham
Association of Educators member

Tony Hutchins

Board Treasurer, Senior Financial Analyst,
Extreme Networks

Jim Key

Founding board chair, retired DPS principal
and high school assistant superintendent

Adam Klein

Board Co-Chair, Director at American
Tobacco Campus and American
Underground & DPS Parent

Tony Macias

Community interpreter, translator,
and language justice organizer, tilde
Cooperative & DPS Parent

Amy Salo

Chief Operating Officer, Student U

Ray Trapp

VP of Strategic Engagement, Research
Triangle Foundation

Edna Wallace

Education Consultant, RTI International
& DPS Parent

Laurie Williamson

Board Secretary, Support Services Specialist,
Exchange Family Center & DPS Parent

Staff



JC Bailey

Scholarship Program Coordinator
(AmeriCorps VISTA)

Logan Barcus

Scholarships & School Partnerships Manager,
social worker, community member, proudly
born and raised in Durham

Xavier Cason

Director of Community Schools
& School Transformation

Alicia Connelly

Communications Coordinator
(AmeriCorps VISTA)

Magan Gonzales-Smith

Executive Director, future DPS Parent

Brianna Kennedy

Director of Programs & Partnerships,
DPS Parent, and former DPS educator

Mercedes McCurley

Family Engagement Organizing Fellow,
former DPS educator and staff

Cris Rivera

Senior Operations Manager

Erika Wilkins

Deputy Executive Director, DPS alum,
former teacher

Katie Spencer Wright

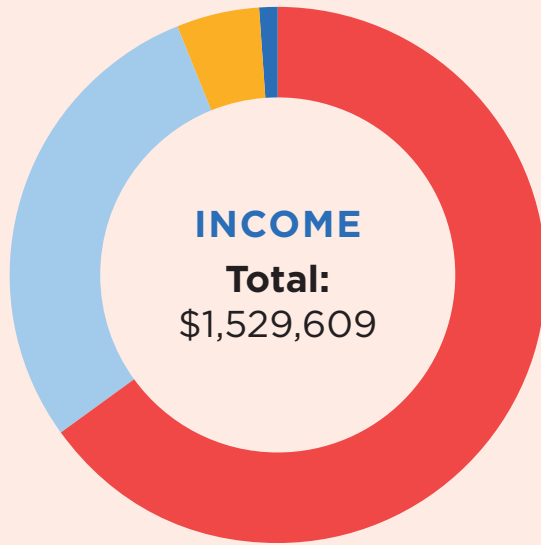
Senior Communications Manager,
future DPS Parent

Special thanks to former staff members

**Jeymi Dubon Reyes, Ann Rebeck and Alyzia
McAlmon for their many contributions to
DPSF's work during FY 21/22.**

One of the highlights of this year for us was working with team members Mercedes McCurley and Jeymi Dubon Reyes to strengthen our commitment to language justice.

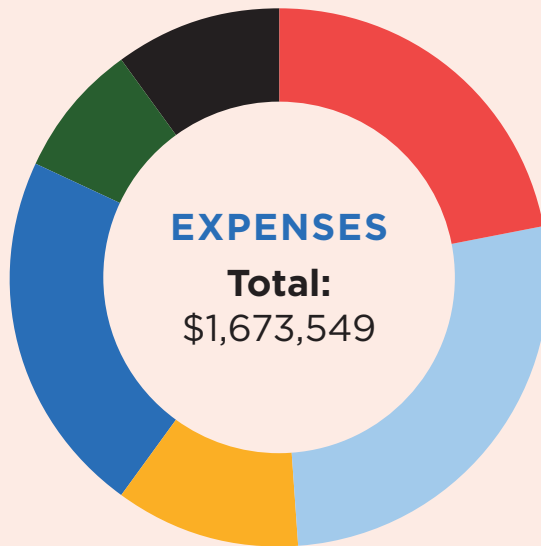
FINANCIALS



65%	Annual Fund \$1,000,604
29%	Covid Relief & WHOLE Schools \$445,139
5%	College Scholarship Program \$69,956
1%	Investment Income \$13,910

NOTE:

An additional (\$135K) net realized/unrealized loss on investments was recorded for FY ended 6/30/22, resulting in total annual income of \$1.46M. This will be included in our 990 and updated year-end financial statements.



22%	Accelerating Digital Equity Initiatives \$366,628
27%	COVID Relief & Recovery \$448,561
11%	College Scholarship Program \$182,678
22%	DPSF Initiatives & Programs \$367,451
8%	Fundraising \$139,245
10%	Management & General \$168,986

NOTE:

ADE and COVID response projects were primarily funded through carry-over restricted funds. The amounts above are presented on a modified cash basis. The fiscal year 2022 accrual-basis numbers are not available at the time of publication. They will be included in our 990 and updated online at that time.

Annual Fund & Covid Relief by Source

Individual	36%
Corporate	27%
Foundation	27%
Government	10%
Faith Community	1%

“From a principal’s perspective, having the Durham Public Schools Foundation is like having the full support of the entire city of Durham on call.”

PRINCIPAL JAMES HOPKINS



PUBLIC SCHOOL CHAMPIONS

Thank you to the 650+ Public School Champions who invested in our schools during FY 21/22! Together we are making Durham a better place to live and learn.

Note: Bolded names are sustainers who give monthly.

JOIN US!


Make a gift or become a monthly DPS Foundation sustainer.
bullcityschools.org/donate

CORNERSTONE PARTNERS (\$25,000+)

United Way of the Greater Triangle
Biogen Foundation
Lenovo
Rho, Inc.
Novartis Gene Therapies
Z Smith Reynold Foundation

VISIONARIES (\$10,000-\$24,999)

Steve Schewel and Lao Rubert
Eli Lilly
Capitol Broadcasting Company
Pacific Western Bank
Fidelity Investments
City of Durham
Google Fiber
Jean-Baptiste Myriel Fund
RTI International
CT Wilson Construction
Carey Family Fund



“We believe in the public school system. There isn’t a better investment you can make than into education, especially public education. Parent involvement is the key to a successful school system and I’m happy to invest my time, treasure, and talent into Durham Public Schools.”

JOHNNY MAY
Donor

PUBLIC SCHOOL CHAMPIONS

LEADERS

(\$5,000-\$9,999)

Leigh Bordley

Merge Records

Nicole Barnes and Maciej Tyrlik

Dr. Laura Helms Reece and Charlie Reece

Red Hat, Inc.

SpringWorks Tx Operating, Inc

Kate B Reynolds Charitable Trust

Richard and Lonna Harkrader

Gad & Marlene Janay Foundation

Three Oaks Engineering

ADVOCATES

(\$2,500-\$4,999)

Blacknall Memorial Presbyterian Church—

Johan Altamirano—Biogen Match Program

Robin & Henri—Matt and Jenny Crowley—

Bell Family Charitable Gift Fund—David

Schaeffer—**Mary R. Amend**—Durham Public

Schools—Susan and Duncan Yaggy—

Nancy Copple

PARTNERS

(\$1,000-\$2,499)

Museum of Life & Science—Susan and Larry

Herst—**Laura Schanberg and Larry Eimers**—

Ameet Hiremath & Kelly Yates—**Cagla Eroglu**—

Ethan Butler—B. Gregory—Phillips O'Donnell

Family Fund—Red Fern Fund—Audrey Byrd—

Kristin and Jacob Clauson Fund—Katie Hagan &

Tony Hutchins—Bob and Mary Etta King—Robert

B. McDuffee—Marcia Morey—Jean Spaulding and

family—Jim and Ruth Key—**Vance and Jamie**

Kite—Peggy and Tim Sanford—Jenny Warburg—

Berke Architects, D.P.C.—Joshua Fulan—Mountain/

Mansfield Gift Fund—**Evan and Lucy Cate**—**Laurie**

and Matt Williamson—Sandy and Ken Lyles—Tim

Scales—**Yamauchi Family**—**Cyndi Lichorowic**

and Kurt Van Horn—**Ruth and Russell**—**Kevin**

and Linda Routh—**AJ Vizedom**—**Leigh and Clay**

Bordley—**Chris & Kristin Heery**—**Nazema Siddiqui**

& Casey Jenkins—Alison and Will Dorsey Eden—

Darren Gobert—**Dolbow Family**—Susan and
Brad Berndt—Gita and Edd Gulati-Partee—Henry
and Elizabeth Sappenfield—Jim and Ruth Key—
Motorco—Brackett's—Matthew Brennan—Ellen
Cassilly—Lenovo Company Match—Phil and Susan
Jakes—Thomas and Margaret Keller—Patricia
Key in honor of Ruth & Jim Key—The Kirsch
Family—Scottie Pate—Mychael-Ann Pelo—Edward
Pikaart—Mary Rae Hunter—Jan Riggsbee—
Stephanie Simon—Svetky-van de Horst Fund of
Triangle Community Foundation—**Angela and**
Bryan Fox—Charlie Bucket Fund of the Triangle
Community Foundation—**Dabney Hopkins**—
Mariana Byrd—**Emily Kahn**—**Cory Quammen**—
Jenna Staples—John and Amy Butler—
Mark Paulson—Steven Grambow—Jean Findlay
Lawrence Landerman—Melissa Pfeil—Ralph
Mccaughan—James O Abrahamson

SUPPORTERS

(\$500-\$999)

Jacob D Baldrige—Durham Pi Beta Phi—

The Harwoods—Thalia Hall Chicago LLC—Gail

S. McCormick—**David and Kathy Bartlett**—

Elizabeth M. Amend—Sledge, Inc.—Live Nation

Nationwide Inc—Gerry & Ray Larson—**Patrick**

Shields and Kate Collins—Mississippi Studios—

Susanne Bauman—**Bill and Mary Davis**—**Sue**

and Matt Mathias—Charles A Conner—**Judith**

Paris Roth—Brooklyn Bowl—**Chris Cordell**

and Kent Guy—**Elizabeth Gillis**—**Lucy**

Inman—**Prudence and Richard Meyer**—**Kitty**

Sherwin—**Sara Terry**—Bowery Cambridge

LLC—**Elaine Scagnelli**—Dave Austin—Belly Up

Tavern—Andrew Janiak—Franziska Rokoske—

Yamazushi—Lanier Blum—Ally and Daniel

Copple—Alex Devon—Rebecca Feinglos

Planchard—Mitchell Heflin—Jillian Hurst—

Julie and Rich Mooney—Karen O'Mansky and

Andy Barron—The parents of a current DPS

educator—Laura Wilson Shaughnessy—Carl

and Lisa Rist—Sandpiper Fund of Triangle

Community Foundation—Hunter & JB Buxton—

Seong Sook Chung—David Davis—Deirdre

Gordon—Carson Harkrader—Nancy Herndon—

Joseph and Judith Liles—Pascal Mubenga—

Sarah Muir—Andrew Nashel—The National

PUBLIC SCHOOL CHAMPIONS

Christian Foundation Carolinas—Lori & Terry—Larry Clark Smith—Jon and Debra Stonehouse—Linda Taylor—Larry and Lee Ann—Frank Welch—Dr. Stelfanie Williams—**Matt Kopac**—Kitty Moses Catherine Scher—Andrew and Amy Cummings—Christina Martinson—Jill Cordell—Mary Jacobs—Helen Wolfson—Jennifer Ethridge—Katherine Hagan—Mike Strauss—Andrew R. Nashel—**Eve Royal**—Tricia Reynolds—Brendan Daley—Lafonda Richburg—McNeil Family Charitable Fund

FRIENDS

(UP TO \$499)

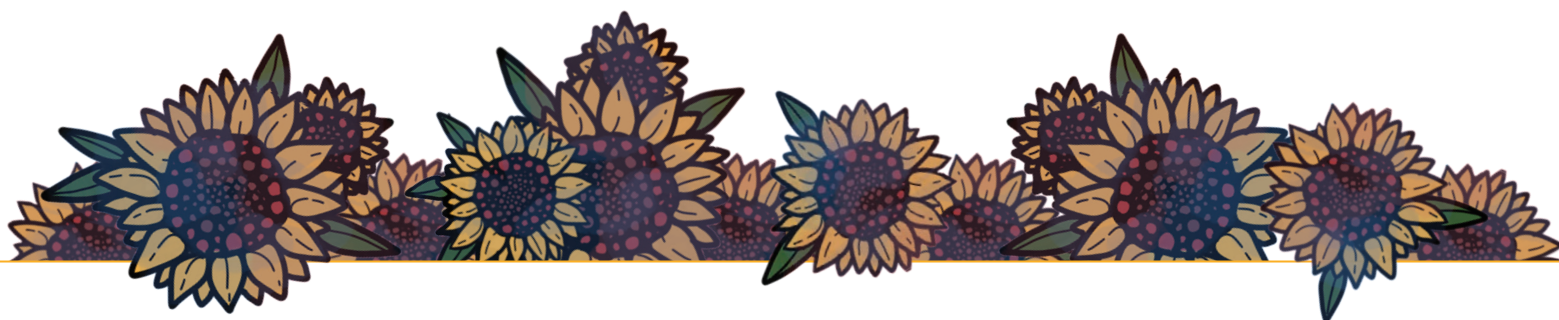
Rachel Randell—**Mary A Kopac**—Claude Drobnes—**James and Deb Dobbins**—**Beth and Ed Anderson**—Marybeth Dugan and Kenny Dalsheimer—Ann Stock—**Zack and Tracey Hawkins**—First and Third Productions, LLC—**Julie O'Brien**—**Xavier & Cynthia Cason**—**Andy Baxter and Susan Gover**—Rob Mitchell and Inga Pollmann—Jack Thigpen—Kristin and Steve Bradley—Bull—Steve Unruhe and Jennifer McGovern—Ed & Elizabeth Hanson—Marcia J. McNally—**Brad and Debra Davis**—**Elizabeth Efird**—**Anne Klar**—**Tom and Lynn Spragens**—**Jessica Jones**—James Umbanhowar—**Micah Luftig**—Ann Rebeck and Misha Angrist—Mammoth Inc—**John Wroton**—Dale Everts and Betsy Blair—Page McCullough—Maria Waite—Jim Baker - In memory of Patricia Kay Key—David Ball & Susan Pochapsky—Carina Barnett-Loro—Sara & Sasha Berghausen—Meredith Emmett and Galia Goodman—Katie and Mike Galbraith—Beverly Murray—Daniel and Amy Salo—The Seymour Chino Family—Denise and Wade Baynham—Katie & Will Stoudemire—**LoveDurhamKids**—Aireen Aguilar—Tucker and Katy Bartlett—Nate Brown—Barbara Buckley—Sally Fessler and David Kirkpatrick—Linda Foreman—Cathy Hall—Manda and Adam Klein—Kevin Magill—Microsoft Match—Bonny Moellenbrock—Pam Winton—**Meg Wiehe**—**Patrick Nalley**—**Mary Dunbar**—**Andy Riddle and Emily Feidelson**—**Meg Smith and Ann Keefe**—Kellison Pohlman LLC—High Noon Saloon—The Clorox Company—**Ricky C Bumpass**—**Annah Latane**—BD Life Science Innovation Team—**Elizabeth Paley and Stefan**

Zauscher—Richard J Chung—Ray Liu—Julia and Chris Vail—Tolly Boatwright and Paul Feldblum—Claire Osgood & Darrell Thompson—The Pipeling Family—Elizabeth Sims—Anne Sfikin and Michael Freemark—Theus and Pat Armistead—Linda Duda—Christoph Frei—Bob Hellwig and Gordon Whitaker—Barbara K. Wellanetz—Ross Williams—**Jillian Johnson**—**Barbara MacKesson and Steve Williams**—**Lynn Shapiro**—Anthony Macias—**Tori Mazur**—Cris Rivera—**Audrey MacInnes**—**Magan Gonzales-Smith**—Holly Rogers—Anonymous Bright Funds—**Cheston Family**—Susan V—The Blanchard Family—Geoff Dunkak—Brooke Hassett—Eric Monson—Peter Raabe—Chapel Hill Mennonite Fellowship—Natalie Beyer—Ellen and Tom Bacon—Barbara Fish—Helen Ladd—Ravi Patil—**Alex and Rebecca Rosen**—Helen Kruskamp and Jesse Bowling—**Chuck Eilber**—Zero Mile Operations, LLC—**Rebecca Callahan**—**Linda Sherck**—Barbara Birkhead—**Marjorie George and Mark Straubel**—**Barbara Jessie**—**Julia Johnson**—**Ira Mueller**—**Molly Renda**—**Mary Roberson and Mark Johnson**—**Kerilyn Schewel**—**Mara Shurgot and Matthew Makel**—**Kaola Swanson**—**Elizabeth Tolman**—**Tommie and Amber Watson**—Carrier Match—**Euba and Henry McKoy**—**Matthew Clayton**—Blue Cross and Blue Shield of North Carolina—Erickson Advisors in Memory of John McAndrew—Elizabeth Josephs—Ashley McKinstry—Max Hurgin—Anonymous—The Adair Family—Zena S Alman—Kate & Bryan Behrenshausen—Erin Conn—Melanie R Daniels—Amanda M De Hoedt—Yasmin Farahi—Martha Farr—Maxine Foster—Mary and Darryl Freedman—Gregory Garneau and Carole Stern—Barrett and Kay Gunter—Diann Hickson—Deborah Jakubs and Jim Roberts—Megan Kemnitz—Heather Linton—Peter Skillern and Marcy Lowe—Matt and Candace McDowell—Sarah & Eric Mine—Eric Mlyn—James Nishimuta—Julie Blume Nye—Aidil Ortiz—David and Jane Parrish—Henry and Sybil Pye—Jillian Ream—Bill Rebeck—Sherri & Clinton, in memory of Pat Key—Emily Rhode and Brian Chapman—Heather Rodrigues—Beth and Joe Rusnak—Peggy Schaeffer—Annie Scott—L & G Smith—Tamara Somers—The Stemmler Family—Ray Trapp—Valda Valbrun—Jane Weinberger—Sam Wilen—Katie and Perry Wright—Charles Hoover—Orange Grove Missionary Baptist Church—Bar Charitable Fund—Jane Avery—Laura

PUBLIC SCHOOL CHAMPIONS

Benedict & John Morris—Deborah Bishop—Helen Boussios—John Burness—The Busch Family Fund—Brian Buzby and Kaci Bishop—Scott Carter—Carol Chelette—Connelly Charitable Gift Fund—Ann Demaine—Junetta Dix—Jamie B. Edll—Emily Feldman-Kravitz—Rita S. Goebel—Peggy Groce—Dave Hardin and Luciana Fellin—Eric and Susanna Henley—Cheryl and Andrew Henry—Faith Herndon—Kaiser-Potter family—Lenore and Joel Katz—Henry Majestic—Elaine Matheson—Brian and Jeanne Murray—Philip and Cynthia Nousak—Dana Peebles—Rekha Perumallu—Melanie Priestman—Alice Ratliff—Sarah Sanchez—RPK GROUP, LLC—Angie Vieth and Arthur Goodwin—Kay and Doug Wellemeier—Steve and Jennifer Wilhoit—Newt Williams—**Marshall McIver**—Justin Grau—Kathy Dyda—Sarah & Madden Meiners—Jane Williams and Roger Kalthoff—**Brianna Kennedy**—Cyrus Carella—Sarah Angrist—Mariel Beasley—Terri Clark—Hope Love—**Perry-Somoroff Family**—**O'Hara Family**—Seated, Inc.—Rachel Raney—Prince Goldstein Fund—**Ellen Messina Ciompi**—Ann Louise d'Entremont—Kelly McNally Koney—D F McClendon—Angelica Aguilar—Ashley Altman—Annie and Jarrod Ambrose—Janelle Averill—Brock Bafford—Sophia Bessias—Ashley Brown—Kate and Hillary

Bruce—Michelle Burton—Harris Carpenter—Emily Kochetkova—Stacy Conrad—David Criswell—Emily Eisenlohr—Jenny Rymell—Courtney & Lee Hodge—Paula Januzzi-Godfrey—Angela M Jeannet—Freya Kamel and Michael Lamvik—Mary Knox—Justin Laidlaw—Amanda Lewis—Rita MacMillan—Jennifer Martin—Bobbi Matchar—Mercedes McCurley—Laura Micham—Alec Motten—Sadie Nott—Nancy C Nye—Lisa Olds—Rosalyn Pelles—Sanjay Premakumar—Bianka Reese—Salmon Family—The family of Abby Rosenberg—Wylli Shenhouse—Mary Sotolongo—Amy Stanfield—Allison Stilley—Rebecca Stone—Katherine Turlington and Bill Taub—Anneliese Taylor—Frances Tong—Bettina Umstead—Roger van der Horst—Wil Weldon—Emily Wexler—**Mayumi Yamazawa**—Olivia Brown—Jefferson Balin—Patricia Bocckino—Stephen Bocckino—Dorothy G Evans—Margaret Flynn—Hope Hartman & Bob Wechsler—Diane Eubanks Hill—Barbara and Bruce Jentleson—Frank and Linda Lambert—Denise and Dan Nelson—Radhika Ramakrishnan—Ally Reynolds—Mary Rushing Pod—Matthew Ruterbories—Morgan Rutherford—Damayanthi Sanaga—Stephanie Shipman—Erica Shirts and Jake Frost—Sondra G Stein—David & Yvonne



“As a daughter of a 30+ year NC public school teacher and a graduate of NC public schools, I have experienced the power and reach of education for all.”

LAURIE WILLIAMSON

Donor and DPSF board member

PUBLIC SCHOOL CHAMPIONS

Straley—Steve and Sandra Toler—Martin Traky—Nancy Christine Westfall—Kathy w/ RTTC Group—Joanne Williams—Poorvi Shah—Heather Anne Cook—**Brett Brenton—Meredith and Sean Driscoll**—Adrienne and Ken Baroff—Anthony Maglione—Adam Eigenrauch—Kristen Jones—Elizabeth Knippler—Kate Shirah & Tom Johnson—Ultra Realty Inc.—Will and Kathy Winslow—Joanne Abel and Rama Mills—Ann Rebeck and Misha Angrist—Lynn C. Evans—Linda Gruenhagen—Jacquelyn Lacoste—David Stein—Lucy Williams—Elizabeth Donahue—Alec Greenwald—Bull City CrossFit—Carolyn Blattel—William Walton—Calvin Galberth—Kerry Holbrook—Teme Levbarg—Januari McKay—Lovette Walton—Jenna Wilkins—Lauren Binanay—Justin Wylie—Bright Funds—PayPal Giving Fund—Protolabs—Jose Mari—**Bartel Family—Nanette de Andrade**—Monika von Windheim—**Tara Avison**—United Way of Central Indiana—**Sonja Vitow—Kirsten Firminger**—Andrew Edmonds—Laura Swanson—**Andrew Smith—Sarah McCaughan—Fair Pickel**—Katherine Swartz—Jacob Geller—Lauren Bradley—**Andrea and Rich Kells**—Holly Rogers—**Sayaka Hino**—Robert Thompson—Scott Matheson—Jesse Bowling—Lauren Gardner—Norman Weiner—Douglas Friesen—**Courtney McGuire—Michelle Friedman**—Carol Robins—Kenneth and Mary Templeton—Susan



Blount—Marquita Miller—Josh Gredvig—Blakely Hildebrand—Elizabeth Paley—Avery Smith—Meghan Palmer—Barbara K. Wellanetz—Jay Bavishi—Ross Williams—Twitter Match—Marty Belin—Tracey Dryden—David Bradway—Jessica Edwards—Amy Johnson—Karen Sindelar—Cheryl Graunke—Erin Lee—Kelsey Mullin—Austin Dixon—Amber and Josh Stohl—Hallie Davis-Penders—Lauren Erickson—Natasha Young—Courtney Chavez—Curtis Walker—Cynthia Bland—Elizabeth B. Benson—Emily Katz—Erin Conn—Hae-Young Kim—Joseph Woolley—Kaci Bishop—Lisa Ford—Steven Markey—Terry Phillips—Susan Rohde—Andrew Wilson—Chantal Reid—Kay and Doug Wellemeyer—Orin Starn—Ruth Bardon—Taylor Macy—Virginia Fitt—Clarence Rogers—Brianna Kennedy—Heather Anne Cook—Briana Gorman—Amy Cleckler—Patrick Mucklow—Robert Ross—Beth Silberman—Daniel Radzicki—Danielle Moloney—Della Flynn—Katherine Neal—Katie Jackson—LaSaundra Vines—Michael Cohen—Rebekah Farris—Charles and Frieda Bostian—James Hastings—Jamie Chambliss—Jessie Larkins—Julia Borbely-Brown—Nora Hanagan—Anna Johnson—Michael Little—Kathleen Malley—Samantha Kittrell—Garrett Taylor—Elizabeth Donahue—Emily Crowder—Tammeka Evans Cooper—Amanda Lazarus—Aviva Emmons



SCHOLARSHIP INVESTORS

Every DPS student deserves a debt-free college education. Thank you to the following supporters for investing in scholarships for our students.

VISIONARIES (\$10,000-\$24,000)

Susan and Larry Herst

ADVOCATES (\$2,500-\$4,999)

Florinda Johnson
Nest Realty
Duke Energy

PARTNERS (\$1,000-\$2,499)

Sandy and Ken Lyles
Jordan High School Alumni Association Inc.
Mechanics and Farmers Bank

SUPPORTERS (\$500-\$999)

Hillside Class of '66 Alumni Scholarship
Fund of Triangle Community Foundation
Gail S. McCormick
David and Kathy Bartlett
Elizabeth M. Amend
Terry Summers and Jim Hall
Anne DiFiore
Scott Hill
Bernard B. Hollowell Jr.
Blackwell Street Mgmt. Co. LLC

FRIENDS (UP TO \$499)

Steve Unruhe and Jennifer McGovern—Ann Rebeck and Misha Angrist—Richard and Trena Hawkins—Charlie Carpenter—Roberta Langford Cone—Virginia Lawn—Youth Pro Musica Foundation—Anne & Tom Niemann—Anne Sporn—Anthony Macias—Natalie Beyer—Barbara Fish—Heidi and Scott Carter—Gary and Suzi Evans—Peter Goswick—Karla Tilley Owen—Ann Gwin Murphy—Nicole Archibald—Patricia Beaver—Deborah Crabtree—Gail Fearing—Paul and Maria Feldman—Kay P. Gresham—Marie Hammond—Rowena Lilly—Carle Woody Mason—David May—The Noga Family—Stephanie O'Brien—Mindy Solie—Barbara Strohbehn—Durham Children's Choir—Leslie Wickham—Loretta Wile—Carol Walker—Anne Berkley—Sally Franz—Corinna Head Herbert—Mary-Frances Morgan—Judy Thomson—Deborah Beroth—Charles and Frieda Bostian—Lois Boynton—Mary Dostert—Frances Ferrell—Susan Ginn—James Hastings—Aaron Mandel—Sara Miller—Joan Montana—Robin Sorrell—Dorothea Waters—Christine Williams—Bruce and Salley Wilson—Fleming Family Trust—William Gutknecht—Andy Stewart—Athena McDaniel



WHOLE SCHOOLS INVESTORS

Thanks to the following early investors for helping to address urgent mental health needs in our Durham Public Schools communities with donations during FY 21/22. Learn more at www.wholeschools.org.



CORNERSTONE PARTNERS (\$25,000+)

Duke University Health System
Anonymous
Anonymous

ADVOCATES (\$1,000-\$4,999)

Matt and Jenny Crowley
Laura Schanberg and Larry Eimers
Jim and Ruth Key
Moiria Rynn
Jeanette Stokes

SUPPORTERS (\$500-\$999)

Gerry & Ray Larson
Justin Wright and Emily Bernhardt
Westminster Presbyterian Church

FRIENDS (UP TO \$499)

Anthony Macias—Lee Lilley—Jeanne Murray—
Marie James Abbruzzese—Jordan Family Laurel,
MD—Montré Freeman

The following donations were made in memory of Zachari Everett Hawkins:

Jim & Ruth Key—Page McCullough—Foushee For
Congress—Nexus Strategies/Morgan Jackson
and Scott Falmlen—Richard J Chung—Vernetta
and Courtney Alston—Lynn Shapiro—Magan
Gonzales-Smith—The Johnson/Rounsley Family—
Taz Eason—Megan Garrett—Jennifer and Brian
Boutte—GCHA—Kristin Baker—Andy Ball—Dawn
Baxton—William V. “Bill” Bell—Tanya (Granger)
Bridges—Cal Cunningham—Durham Democratic
Women—Danyell Johnson—Warren Kibbe—Rep.
Billy Richardson—Anton Zuiker—Jamie Asby—Lisa
Levenstein—Taylor Nguyen—Tremaine L Roberts—
Mark L Newman—Brightleaf Consulting Group,
LLC—Hon. John S. Arrowood—Edward Gardner—
LaTanya Hawkins—Susan H Knox—T Land—
Shelton Morgan—Elizabeth Pickering—Laurie A
Thompson—LaSaundra Vines—Becca Zerkin—
Rep. Susan C. Fisher—Wendy Jacobs—Allison
Baranowski—Jennifer D.—Samantha Lyons-Kittrell
& family—4 Zachary—Ronald Jackson—Lambda
Gamma #2 Fall 95—Tyrone Mitchell—Crystal
Cannon—Tammeka Evans Cooper—Angelique
Jennings—Paula A. Wolf—RADx-UP—Sarah
Turner—Danani Gary Matt Kopac—Drew
Cummings—Richard Chung—Stephen Wiley—
Orange Grove Missionary Baptist Church—
Virginia Fitt—Susan Ross—Michael Cohen—Sarah
Paterson—Natalie Beyer—LaTronya Cohen—
James White NC House of Representatives—
Caleb Rudow—Gayani Tillekeratne



DPS
FOUNDATION

JOIN US!

Make a gift or become a monthly
DPS Foundation sustainer.

bullcityschools.org/donate